

## DONORS

Gayle Pierce

Allan & Erica Kennedy

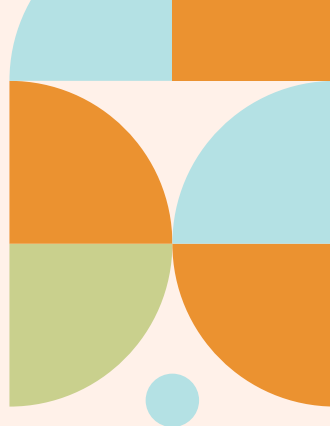
Jim & Beverly Herring

Friends of the  
Ridgeland Library

Friends of the  
Canton Library

Friends of the  
Madison Library

Patrons of the Madison  
County Library System



Humana®

Pirouline®



Madison  
County  
LIBRARY  
SYSTEM


Knowledge • Community • Imagination

## Bookmobile



Follow us on social media!  
Facebook.com/MCLSLibraries  
Instagram: @mclsms

[www.mclsms.org](http://www.mclsms.org)



## WHAT SERVICES DOES THE BOOKMOBILE PROVIDE?

Computer access to the internet and technology assistance.

Books, audiobooks, comics, graphic novels, and movies.

Storytimes, DIY crafts, activities, games, and special needs resources.

Assistance filling out government forms & employment assistance.

Video games, 3D printing, resume & career building, and tech classes.

## WHERE DOES THE BOOKMOBILE GO?

From rural and urban areas to cities.

Schools, daycare centers, senior centers, and assisted living facilities.

Parks & recreation areas, fairs, festivals, farmer's markets, and community centers.

Neighborhoods, grocery stores, and more.

**The Bookmobile goes where YOU go!**

## SEE OUR SCHEDULE:

<https://mcls.insigniaails.com/Library/Event>

---

## WANT THE BOOKMOBILE AT YOUR NEXT EVENT?

Email our Outreach Librarian, Evanne Flanders at [eflanders@mcls.ms](mailto:eflanders@mcls.ms) to schedule a Bookmobile stop or to see if you qualify for Homebound Delivery Services!

---

## CONTACT

**Evanne Flanders**  
(601) 856-2749 ext. 105  
[eflanders@mcls.ms](mailto:eflanders@mcls.ms)

